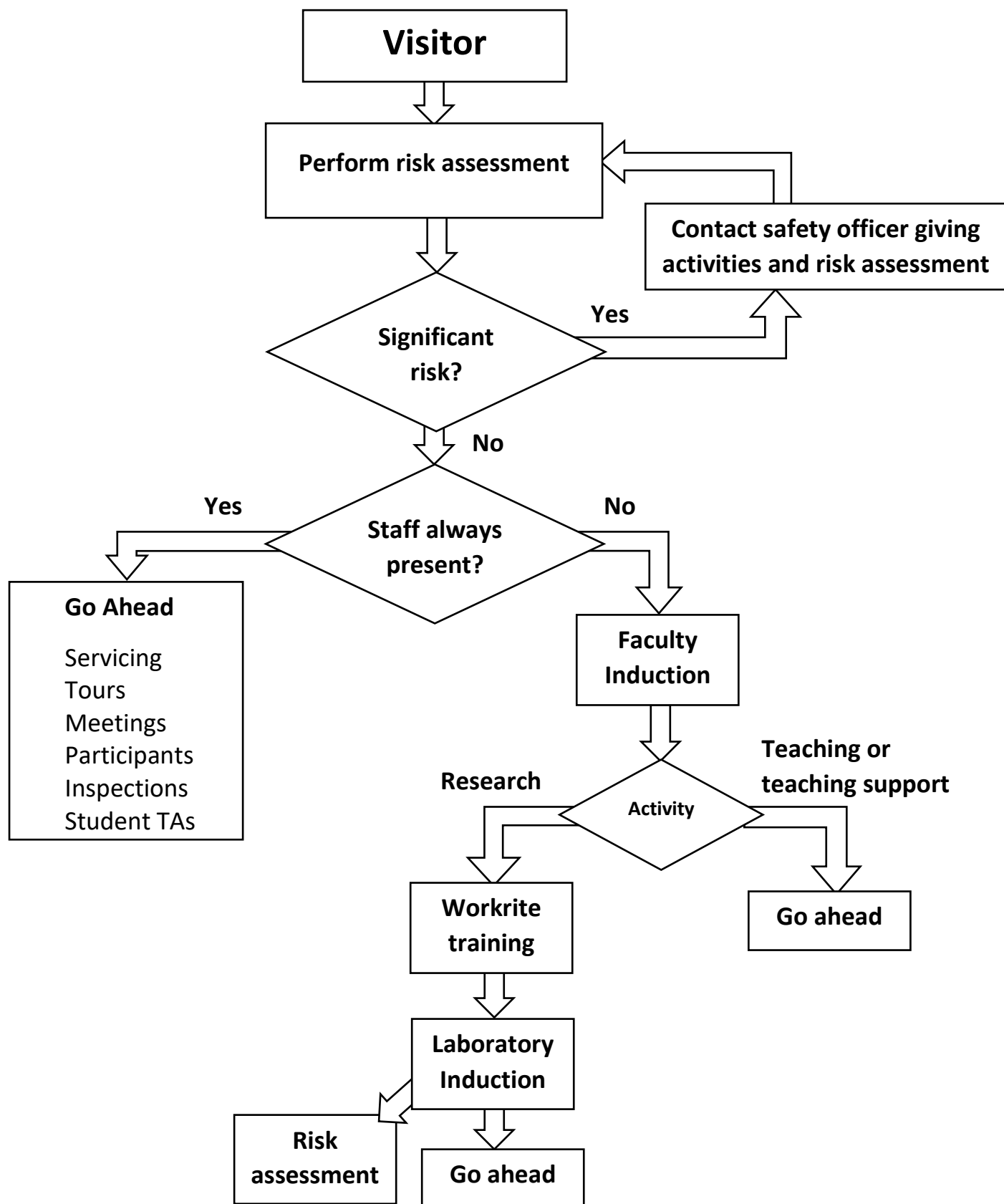


Procedure for visitors to Sports in FHSS



Notes.

Risk assessment RA153 at <https://sportsciencesafety.stir.ac.uk> covers service visits

Room bookings require a risk assessment for any meeting. You can find examples on the faculty safety Sharepoint site. <https://stir.sharepoint.com/sites/HScommunityofpractice>

You may have to contact Safety and the Environment to get access for visitors to Workrite training. There is a small charge associated with this.