

Database Update Executable

The Database Update executable will need to be run for the following scenarios:

- Prior to importing EXP files from any new Allele Database Update
- To Update CWD highlighting
- To Update Serological Equivalents
- Or as notified by LIFECODES

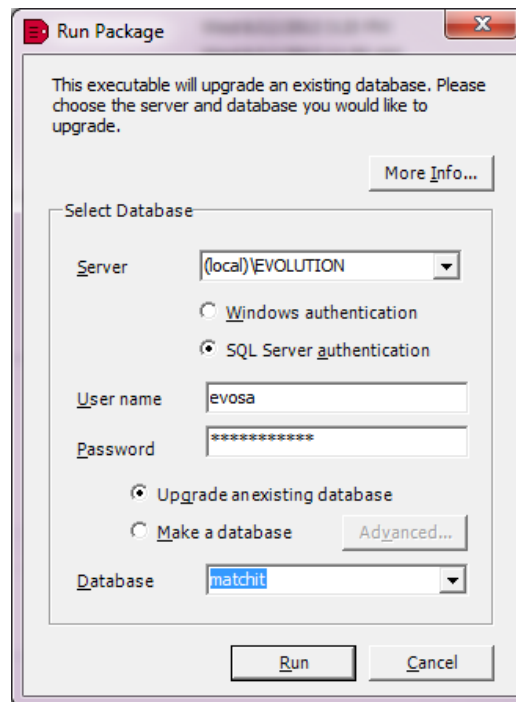
After executing Database Updates, the database allele tables will be modified to include new alleles, and updated CWD alleles and serological equivalents.

The changes made to the database are irreversible. Although not necessary, if database update verification is needed, please use a test database.

NOTE: When creating a new database, please check the website for any database update executable and apply to new database.

Please refer to the directions below on how to execute the Database Update Executable.

1. Download the appropriate Database Update executable found under the Downloads tab at www.IMMUCOR.COM/LIFECODES
2. Run (as administrator) the Database Update executable



3. Server field should be:

- server name
- server name\EVOLUTION
- (local)\EVOLUTION

*If the database is located on a dedicated server use the server name

*If the database is being updated via the network use Server name\EVOLUTION

*If the database is located locally on a lab computer (PC with Full Installation)
use (local)\EVOLUTION

Please note: In some instances the MATCH IT! Databases may be in the LIFECODES instance. If this is the case, please enter (local)\LIFECODES

4. Select "SQL Server Authentication"

User name = evosa

Password = lifematch#1

5. Select "Upgrade an existing database"

6. Click the arrow on the right-hand side of the Database text box. Select the database to upgrade.

Repeat steps 2 -6 for each database that needs to be updated.